

Symbol Legend



CONSULT INSTRUCTIONS
FOR USE



CAUTION



MANUFACTURER



BATCH CODE



USE-BY DATE



STERILIZED USING
ETHYLENE OXIDE



TEMPERATURE LIMITS



DO NOT USE IF
PACKAGE IS DAMAGED



DO NOT RESTERILIZE

insuJet™

Insulin - Jet Administration System

Information Adaptor 3mL

for disposable insulin pens



- Please read the complete instructions for use booklet inside the InsuJet™ package before using the InsuJet™ system.
- Keep the original InsuJet™ instructions for use in safe custody.
- This packaging contains sterile consumables for use in combination with the InsuJet™ system.
- This package will only contain one type of consumable.



European Pharma Group BV



ISO 13485 certified

Euro Offices Building 3rd Floor
Beechavenue 127, 1119 RB
Schiphol-Rijk, The Netherlands

www.insuJet.com | info@insuJet.com

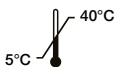
CE 0459

017503-EN-2.0
30 Oct 2017

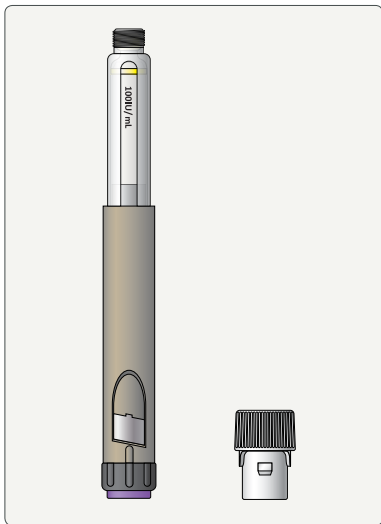


Important

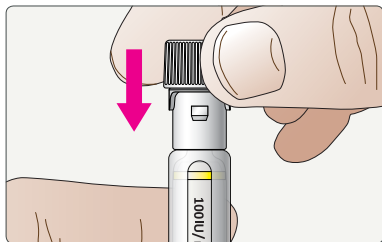
- Check the expiration dates of the InsuJet™ consumables.
- Never use the same Adaptor for different patients.
- Never use the same Adaptor for different disposable insulin pens.
- Discard the Adaptor with the empty insulin pen.
- Temperature limits for use:



Using insulin from a disposable penfill.

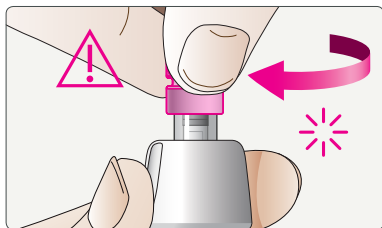


Example of a disposable penfill with a 3mL Adaptor



Take the 3mL Adaptor and place it on top of the disposable penfill.

Push the Adaptor firmly onto the penfill until it is fixed.



NOTICE:

When attaching the Adaptor and disposable penfill on the Nozzle, make sure to hold the Adaptor when rotating it.

Rotate firmly and make sure that the Adaptor snaps in place.